



**REGIONAL SPECIALISED METEOROLOGICAL CENTRE-TROPICAL CYCLONES, NEW DELHI
SPECIAL TROPICAL WEATHER OUTLOOK**

DEMS-RSMC TROPICAL CYCLONES NEW DELHI DATED 01.09.2024

SPECIAL TROPICAL WEATHER OUTLOOK FOR NORTH INDIAN OCEAN (THE BAY OF BENGAL AND THE ARABIAN SEA) VALID FOR NEXT 168 HOURS ISSUED AT 2000 UTC OF 01.09.2024 BASED ON 1800 UTC OF 01.09.2024.

SUB: (A) DEEP DEPRESSION (REMNANT OF CYCLONIC STORM “ASNA”) OVER NORTHWEST ARABIAN SEA AND (B) DEPRESSION OVER SOUTHEAST VIDARBHA AND NEIGHBOURHOOD

(A) DEEP DEPRESSION (REMNANT OF CYCLONIC STORM “ASNA”) OVER NORTHWEST ARABIAN SEA

DEEP DEPRESSION (REMNANT OF CYCLONIC STORM “ASNA”) OVER NORTHWEST ARABIAN SEA MOVED SOUTH-SOUTHWESTWARDS WITH A SPEED OF 10 KMPH DURING PAST 6 HOURS, LAY CENTERED AT 1800 UTC OF 01ST SEPTEMBER, 2024 OVER THE SAME REGION NEAR LATITUDE 21.7°N AND LONGITUDE 61.5°E, ABOUT 190 KM EAST-SOUTHEAST OF RAS AL HADD (41270) AND 390 KM EAST-SOUTHEAST OF MUSCAT (41256).

IT IS LIKELY TO CONTINUE TO MOVE FURTHER SOUTH-SOUTHWESTWARDS OVER NORTHWEST ARABIAN SEA AND WEAKEN GRADUALLY INTO A DEPRESSION BY 0000 UTC OF 2ND SEPTEMBER OVER THE SAME REGION.

AS PER INSAT 3DR IMAGERY, AT 1800 UTC OF 01ST SEPTEMBER, INTENSITY OF THE SYSTEM IS CHARACTERISED AS T 2.0. MODERATE CONVECTION OVER NORTHWEST ARABIAN SEA, SOUTHEAST IRAN, GULF OF OMAN AND NORTH OMAN, (MINIMUM CLOUD TOP TEMPERATURE IS MINUS 40°C).

ASSOCIATED MAXIMUM SUSTAINED WIND SPEED IS 30 KTS GUSTING TO 40 KTS. ESTIMATED CENTRAL PRESSURE (MSLP) IS 996 HPA.

FORECAST TRACK AND INTENSITY ARE GIVEN IN THE FOLLOWING TABLE:

DATE/TIME (UTC)	POSITION (LAT. °N/ LONG. °E)	MAXIMUM SUSTAINED SURFACE WIND SPEED (KMPH)	CATEGORY OF CYCLONIC DISTURBANCE
01.09.24/1800	21.7/61.5	50-60 GUSTING TO 70	DEEP DEPRESSION
02.09.24/0000	21.2/61.3	40-50 GUSTING TO 60	DEPRESSION

WARNINGS:

SEA CONDITION AND ADVISORY FOR FISHERMEN IN ASSOCIATION WITH DEEP DEPRESSION (REMNANT OF CYCLONIC STORM ASNA) OVER NORTHWEST ARABIAN SEA:

WIND WARNING:

- SQUALLY WIND SPEED REACHING 50-60 KMPH GUSTING TO 70 KMPH IS PREVAILING OVER NORTHWEST ARABIAN SEA AND LIKE TO BECOME 40-50 KMPH GUSTING TO 60 KMPH BY 0000 UTC OF 2ND SEPTEMBER AND DECREASE THEREAFTER.
- SQUALLY WIND SPEED REACHING 40-50 KMPH GUSTING TO 60 KMPH IS LIKELY TO PREVAIL OVER CENTRAL ARABIAN SEA TILL 0000 UTC OF 2ND SEPTEMBER AND IMPROVE GRADUALLY THEREAFTER.
- STRONG WIND SPEED REACHING 30-40 KMPH GUSTING TO 50 KMPH IS LIKELY ALONG AND OFF GUJARAT, MAHARASHTRA AND KARNATAKA COAST TILL 0000 UTC OF 2ND SEPTEMBER.

SEA CONDITION:

- VERY ROUGH TO ROUGH SEA CONDITION IS LIKELY TO PREVAIL OVER NORTHWEST ARABIAN SEA TILL 0000 UTC OF 2ND SEPTEMBER AND WOULD IMPROVE THEREAFTER.
- ROUGH SEA CONDITION IS LIKELY OVER ADJOINING WESTCENTRAL ARABIAN SEA TILL 2ND SEPTEMBER.

FISHERMEN WARNING:

FISHERMEN ARE ADVISED NOT VENTURE INTO NORTHWEST ARABIAN SEA AND ADJOINING WESTCENTRAL ARABIAN SEA TILL 2ND SEPTEMBER.

(B) DEPRESSION OVER SOUTHEAST VIDARBHA AND NEIGHBOURHOOD

THE DEPRESSION OVER SOUTH CHHATTISGARH AND NEIBHOUHOOD MOVED WEST-NORTHWESTWARDS WITH A SPEED OF 15 KMPH DURING THE PAST 6 HOURS AND LAY CENTERED AT 1800 UTC OF 01ST SEPTEMBER, 2024 OVER SOUTHEAST VIDARBHA AND NEIGHBOURHOOD NEAR LATITUDE 19.3°N AND LONGITUDE 80.4°E, ABOUT 170 KM WEST OF JAGDALPUR (43041,CHHATTISGARH), 120 KM EAST-NORTHEAST OF RAMAGUNDAM (43086,TELANGANA), 160 KM SOUTH-SOUTHEAST OF BRAMHAPURI (42946,MAHARASHTRA) AND 140 KM EAST-SOUTHEAST OF CHANDRAPUR (43029,MAHARASHTRA).

IT IS LIKELY TO MOVE NEARLY NORTHWESTWARDS ACROSS VIDARBHA AND WEAKEN INTO A WELL MARKED LOW PRESSURE AREA DURING NEXT 12 HOURS.

ASSOCIATED BROKEN LOW AND MEDIUM CLOUDS WITH EMBEDDED INTENSE TO VERY INTENSE CONVECTION LAY OVER SOUTH CHHATTISGARH, TELANGANA. MINIMUM CTT IS MINUS 93 DEG CELSIUS.

ASSOCIATED MAXIMUM SUSTAINED WIND SPEED IS 20 KTS GUSTING TO 30 KTS. ESTIMATED CENTRAL PRESSURE IS 1000 HPA. AT 1800 UTC, AKOLA (VIDARBHA) REPORTED MEAN SEA LEVEL PRESSURE (MSLP) OF 1001.5 HPA, AND 24 HOURS PRESSURE CHANGE (P24) OF -3.6 HPA. NAGPUR SONEGAON (VIDARBHA) REPORTED MSLP OF 1001.0 HPA, AND P24 OF 1.9 HPA.

SEA CONDITION AND ADVISORY FOR FISHERMEN FOR BAY OF BENGAL

SEA CONDITION:

- ROUGH SEA CONDITION IS VERY LIKELY TO PREVAIL OVER WESTCENTRAL AND ADJOINING NORTHWEST BAY OF BENGAL ALONG & OFF NORTH ANDHRA PRADESH & SOUTH ODISHA COASTS DURING NEXT 12 HOURS.

FISHERMEN WARNING:

FISHERMEN ARE ADVISED NOT TO VENTURE INTO

- WESTCENTRAL & ADJOINING NORTHWEST BAY OF BENGAL ALONG & OFF SOUTH ODISHA AND NORTH ANDHRA PRADESH COASTS ON 1ST SEPTEMBER.

REMARKS:

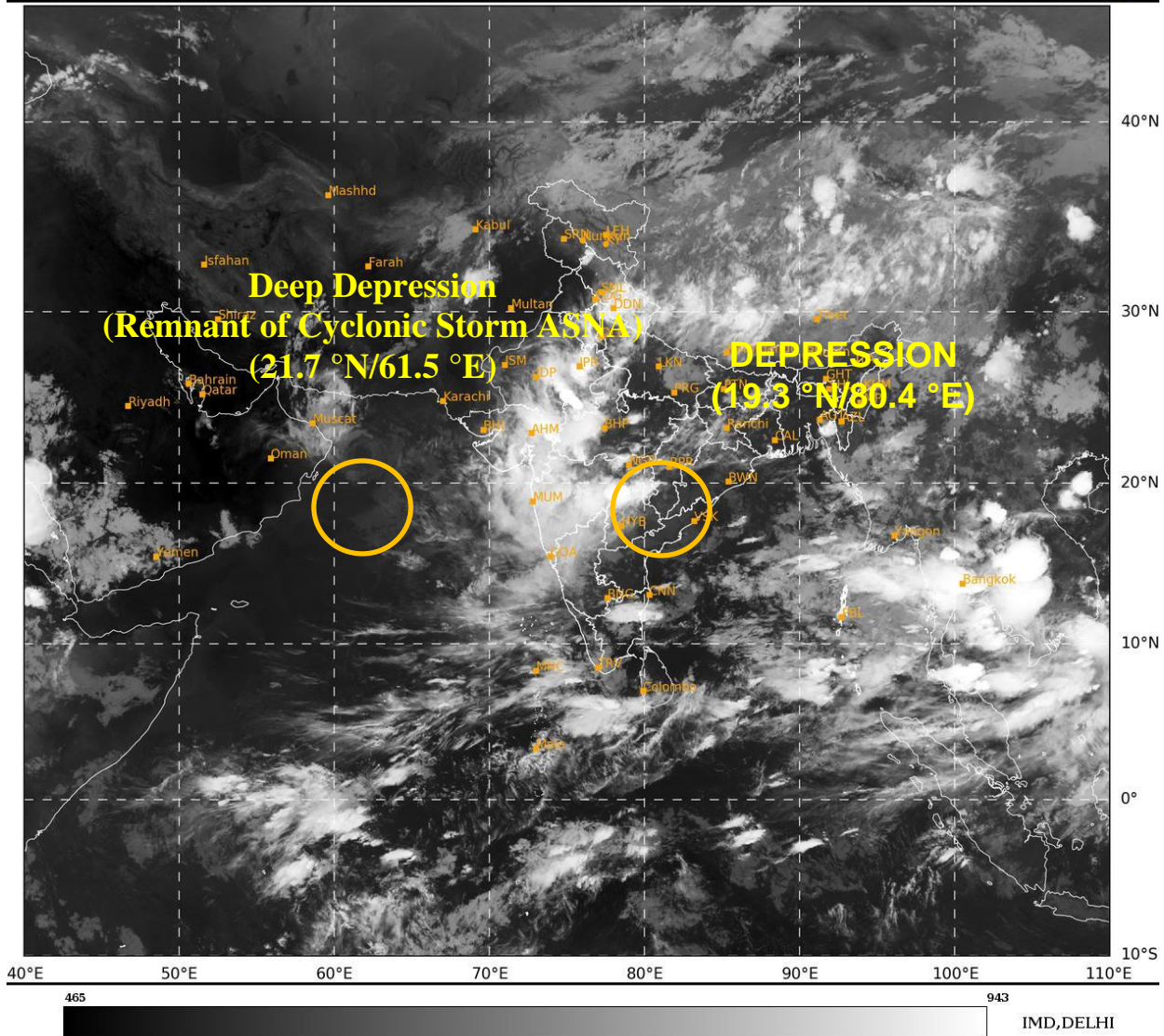
SEA SURFACE TEMPERATURE IS 28-29⁰C OVER WESTCENTRAL ARABIAN SEA AND IS LIKELY TO DECREASE ALONG THE FORECAST PATH OF SYSTEM. THE TROPICAL CYCLONE HEAT POTENTIAL IS LESS THAN 50 KJ/CM² OVER NORTHWEST AS. THE LOW LEVEL VORTICITY IS AROUND 100X10⁻⁵ S⁻¹ TO THE SOUTH OF THE SYSTEM AREA. LOW LEVEL CONVERGENCE IS 10X10⁻⁵ S⁻¹ TO THE SOUTHEAST OF THE SYSTEM CENTRE AND UPPER LEVEL DIVERGENCE IS ALSO 10X10⁻⁵ S⁻¹ TO THE NORTHWEST OF THE SYSTEM CENTRE. WIND SHEAR IS LOW TO MODERATE TO HIGH (20-25 KT) OVER SYSTEM AREA AND IS LIKELY TO BECOME HIGH OVER THE FORECAST PATH OF SYSTEM. THE NORTHEASTERLY WINDS IN THE UPPER LEVELS OVER SYSTEM AREA ARE STEERING THE SYSTEM SOUTHWESTWARDS.

IN ASOCIATION WITH THE DEPRESSION OVER SOUTHEAST VIDARBHA AND NEIGHBOURHOOD, THE LOW LEVEL VORTICITY IS POSITIVE AND IS AROUND 80-100X10⁻⁵ S⁻¹ OVER COASTAL ANDHRA PRADESH WITH EXTENSION UPTO MID TROPOSPHERIC LEVELS. LOW LEVEL CONVERGENCE IS 20X10⁻⁵ S⁻¹ AND IS NORTHEAST-SOUTHWEST ORIENTED AND UPPER LEVEL DIVERGENCE IS 20X10⁻⁵ S⁻¹ AND IS NORTH-SOUTH ORIENTED. WIND SHEAR IS HIGH OVER THE SYSTEM AREA.

CONSIDERING ALL THE ABOVE, IT IS INFERRED THAT:

- (1) DEEP DEPRESSION OVER NORTHWEST ARABIAN SEA IS LIKELY TO MOVE FURTHER SOUTH-SOUTHWESTWARDS OVER NORTHWEST ARABIAN SEA AND WEAKEN GRADUALLY INTO A DEPRESSION BY 0000 UTC OF 2ND SEPTEMBER OVER THE SAME REGION.
- (2) THE DEPRESSION OVER SOUTHVIDARBHA AND NEIGHBOURHOOD IS LIKELY TO MOVE NEARLY NORTHWESTWARDS ACROSS VIDARBHA AND WEAKEN INTO A WELL MARKED LOW PRESSURE AREA DURING NEXT 12 HOURS.

(JOHNY C J)
SCIENTIST-D
RSMC NEW DELHI



Cloud distribution: (a) Isolated: <25%, Scattered:25-50%, Broken: 51-75%, Solid:>75%, Convection Intensity: (a) Weak: Cloud Top Temperature (CTT) >-25°C, (b) Moderate: CTT: - 25°C to -40°C, (c) Intense: CTT: - 41°C to -70°C and (d) Very Intense: : Less than -70°C
PROBABILITY OF CYCLOGENESIS (FORMATION OF DEPRESSION):NIL: 0%, LOW: 1-33%, , MODERATE: 34-66% AND HIGH: 67-100%
This is a guidance Bulletin for WMO/ESCAP Panel Member countries. Visit respective National websites for Country specific Bulletins



OBSERVED AND FORECAST TRACK OF DEPRESSION OVER SOUTHEAST VIDARBHA AND NEIGHBOURHOOD BASED ON 1800 UTC (2330 IST) OF 1ST SEPTEMBER, 2024.



DATE/TIME IN UTC
 IST=UTC + 0530
 L: LOW PRESSURE AREA
 WML: WELL MARKED LOW PRESSURE AREA
 D: DEPRESSION (17-27 KT)
 DD: DEEP DEPRESSION (28-33 KT)
 CS: CYCLONIC STORM (34-47 KT)
 SCS: SEVERE CYCLONIC STORM (48-63KT)
 VSCS: VERY SEVERE CYCLONIC STORM (64-89 KT)
 ESCS: EXTREMELY SEVERE CYCLONIC STORM (90-119 KT)
 SuCS: SUPER CYCLONIC STORM (≥20 KT)

● LESS THAN 34 KT
 ○ 34-47 KT
 ○ ≥ 48 KT
 — OBSERVED TRACK
 — FORECAST TRACK
 ▲ CONE OF UNCERTAINTY

WCB: WESTCENTRAL BAY OF BENGAL
 ECB: EASTCENTRAL BAY OF BENGAL
 NWB:NORTHWEST BAY OF BENGAL



OBSERVED AND FORECAST TRACK OF DEEP DEPRESSION (REMNANT OF ASNA) ALONGWITH CONE OF UNCERTAINTY OVER NORTHWEST ARABIAN SEA BASED ON 1800 UTC (2330 IST) OF 1st SEPTEMBER, 2024.



DATE/TIME IN UTC
 IST=UTC + 0530
 L: LOW PRESSURE AREA
 WML: WELL MARKED LOW PRESSURE AREA
 D: DEPRESSION (17-27 KT)
 DD: DEEP DEPRESSION (28-33 KT)
 CS: CYCLONIC STORM (34-47 KT)
 SCS: SEVERE CYCLONIC STORM (48-63KT)
 VSCS: VERY SEVERE CYCLONIC STORM (64-89 KT)
 ESCS: EXTREMELY SEVERE CYCLONIC STORM (90-119 KT)
 SuCS: SUPER CYCLONIC STORM (≥ 120 KT)

● LESS THAN 34 KT
 ○ 34-47 KT
 ○ ≥ 48 KT
 — OBSERVED TRACK
 — FORECAST TRACK
 ● CONE OF UNCERTAINTY



OBSERVED AND FORECAST TRACK OF DEEP DEPRESSION (REMNANT OF ASNA) ALONGWITH QUADRANT WIND DISTRIBUTION OVER NORTHWEST ARABIAN SEA BASED ON 1800 UTC (2330 IST) OF 1st SEPTEMBER, 2024.



DATE/TIME IN UTC
 IST=UTC + 0530
 L: LOW PRESSURE AREA
 WML: WELL MARKED LOW PRESSURE AREA
 D: DEPRESSION (17-27 KT)
 DD: DEEP DEPRESSION (28-33 KT)
 CS: CYCLONIC STORM (34-47 KT)
 SCS: SEVERE CYCLONIC STORM (48-63KT)
 VSCS: VERY SEVERE CYCLONIC STORM (64-89 KT)
 ESCS: EXTREMELY SEVERE CYCLONIC STORM (90-119 KT)
 SuCS: SUPER CYCLONIC STORM (≥ 120 KT)

● LESS THAN 34 KT
 ○ 34-47 KT
 ● ≥ 48 KT
 — OBSERVED TRACK
 — FORECAST TRACK
 — CONE OF UNCERTAINTY
 AREA OF MAXIMUM SUSTAINED WIND SPEED:
 ■ 28-33 KT (52-61 KMPH)
 ■ 34-49 KT (62-91 KMPH)
 ■ 50-63 KT (92-117 KMPH)
 ■ ≥ 64 KT (≥118 KMPH)

IMPACT OVER THE SEA

MSW (knot/kmph)	Impact	Action
28-33 (52-61)	Very rough seas	Total suspension of fishing operations
34-49 (62-91)	High to very high seas	Total suspension of fishing operations
50-63 (92-117)	Very high seas	Total suspension of fishing operations
≥ 64 (≥118)	Phenomenal	Total suspension of fishing operations

Cloud distribution: (a) Isolated: <25%, Scattered:25-50%, Broken: 51-75%, Solid:>75%, Convection Intensity: (a) Weak: Cloud Top Temperature (CTT) >-25°C, (b) Moderate: CTT: - 25°C to -40°C, (c) Intense: CTT: - 41°C to -70°C and (d) Very Intense: : Less than -70°C
 PROBABILITY OF CYCLOGENESIS (FORMATION OF DEPRESSION):NIL: 0%, LOW: 1-33%, , MODERATE: 34-66% AND HIGH: 67-100%
 This is a guidance Bulletin for WMO/ESCAP Panel Member countries. Visit respective National websites for Country specific Bulletins



Fishermen Warning Graphics

